

# The CO<sub>2</sub> retrievals from IASI, AIRS and SCIAMACHY data and their validation by in situ measurements

C. Camy-Peyret<sup>1</sup>, A. Uspensky<sup>2</sup>, A. Rublev<sup>3</sup>, S. Romanov<sup>3</sup>, A. Kukharsky<sup>2</sup>

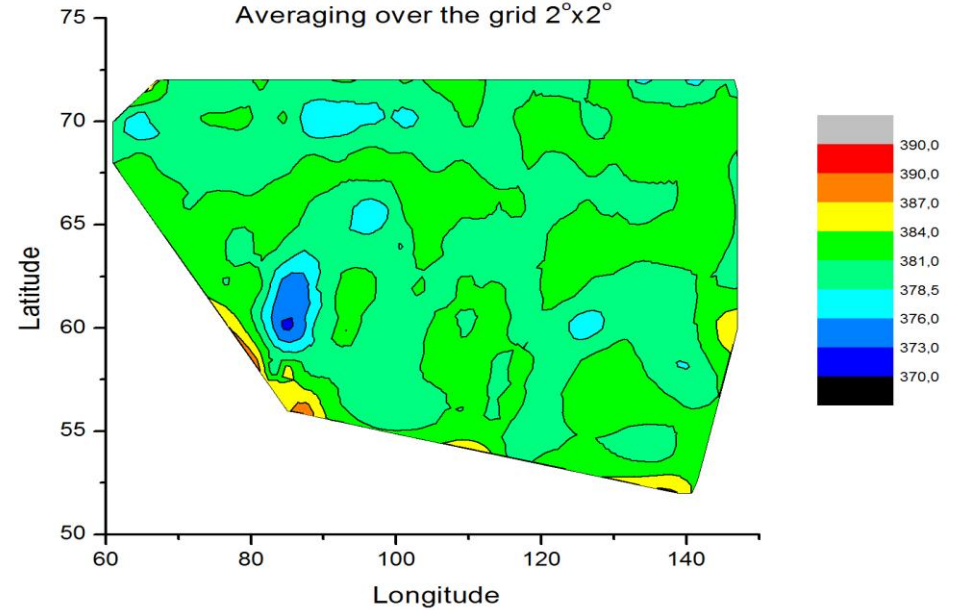
1. Université Pierre et Marie Curie et CNRS Physics department, LPMAA; 2. SRC PLANETA, Moscow, Russia;

3. RRC Kurchatov Institute, Moscow, Russia



## CO<sub>2</sub>, ppmv retrievals

Averaging over the grid 2°x2°



Poster # 35